



## WHAT'S NEW AND RELEASE NOTES

Release: 2021.2



## IN THIS RELEASE

<b>NEW FEATURES AND IMPROVEMENTS.....</b>	<b>2</b>
DATA PREPARATION.....	2
Profile Primary and Foreign Keys .....	2
STORYBOARDS.....	3
Hide sidebar and toolbar when embedding Storyboards.....	3
Add labels for columns in the Table widget .....	4
Improved Storyboards performance .....	5
INSTALLATION & CONFIGURATION.....	6
Configure logging levels.....	6

## NEW FEATURES AND IMPROVEMENTS

### DATA PREPARATION

#### Profile Primary and Foreign Keys

Data Preparation can now automatically profile numeric Primary Keys (PK) and Foreign Keys (FK) as regular dimensions or geospatial dimensions. Additionally, the PK and FK columns are now suggested for joins in **Step 3 – Join and Preview**.

Also, automatic profiling now includes more criteria and keywords to identify the data types for dataset columns. If a column name contains different keywords, one as a suffix and the other as a prefix, then the suffix takes priority. For example, Location ID becomes a dimension because the column name ends with “ID.”

The screenshot displays the 'STEP 3 - JOIN AND PREVIEW' interface. On the left, under 'DATA SOURCES', there are three categories: 'Locations' (with columns like Location ID, Country, State Code, State, Region, City, Manager, Manager Avatar), 'Products' (with columns like Product ID, Department, Product Line, Product Type), and 'Store Types' (with columns like Store Type ID, Store Type). The main area shows 'APPROVED JOINS' (none) and 'RECOMMENDED JOINS' (Location ID, Product ID, Store Type ID from their respective sources joined to the 'Sales' source). Below this is a 'Data preview' section showing a table of sales data.

SALES							
Sales Date	Items per transaction	Sales per transaction	No of customers	Quantity	Unit Price	Discount	Gross Sales
	#	#	#	#	#	#	#
Feb 2 2014 00:00:00	11	148	13	31	39	0.05	1148.55
Sep 5 2014 00:00:00	8	669	5	28	6	0.01	166.32
Jun 14 2014 00:00:00	9	564	9	36	19	0.04	656.64
Dec 6 2015 00:00:00	8	72	5	42	60	0.09	2293.20
Dec 23 2014 00:00:00	9	65	9	31	101	0.08	2880.52
Nov 11 2014 00:00:00	10	125	14	48	219	0.10	9460.80
Oct 15 2014 00:00:00	12	54	15	29	41	0.07	1105.77
Mar 11 2016 00:00:00	9	626	10	32	196	0.10	5644.80
Jul 13 2015 00:00:00	9	399	8	29	15	0.07	404.55

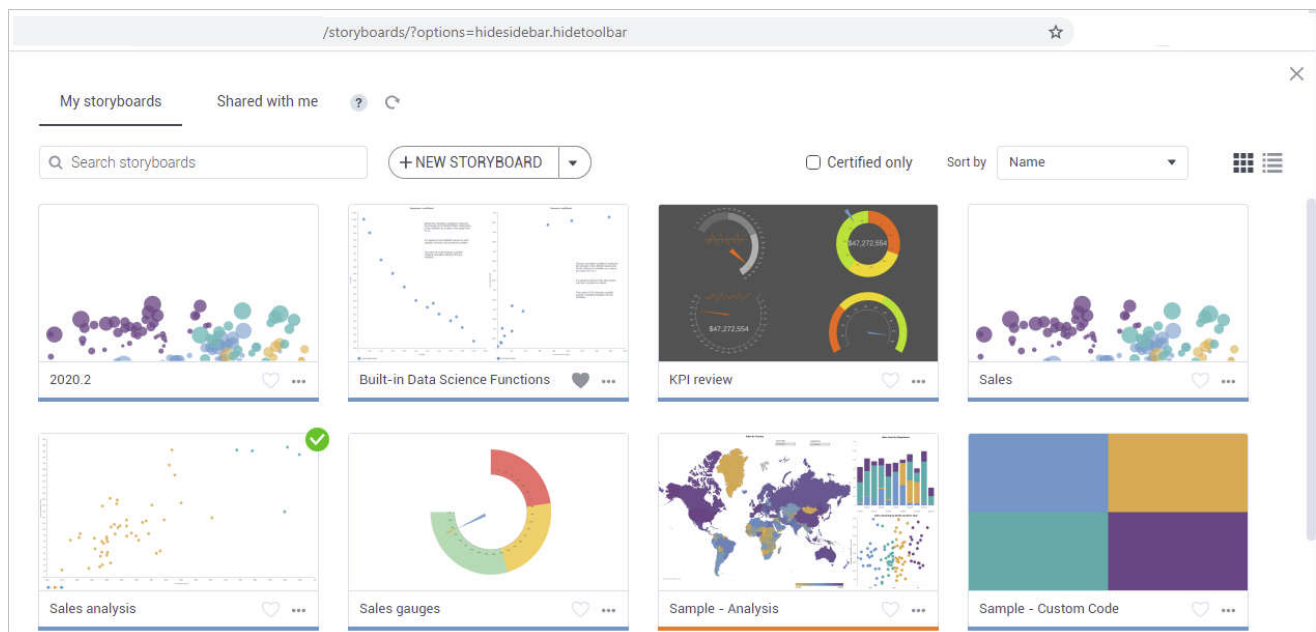
## STORYBOARDS

### *Hide sidebar and toolbar when embedding Storyboards*

Starting with this release, you can hide the Storyboards application sidebar or toolbar if the application is embedded or when a user may need to extend the working area.

If you want to extend page area, you can add one of the following query parameters to the application URL:

- ?options=hidesidebar
- ?options=hidetoolbar
- ?options=hidesidebar.hidetoolbar (to hide both)



## Add labels for columns in the Table widget

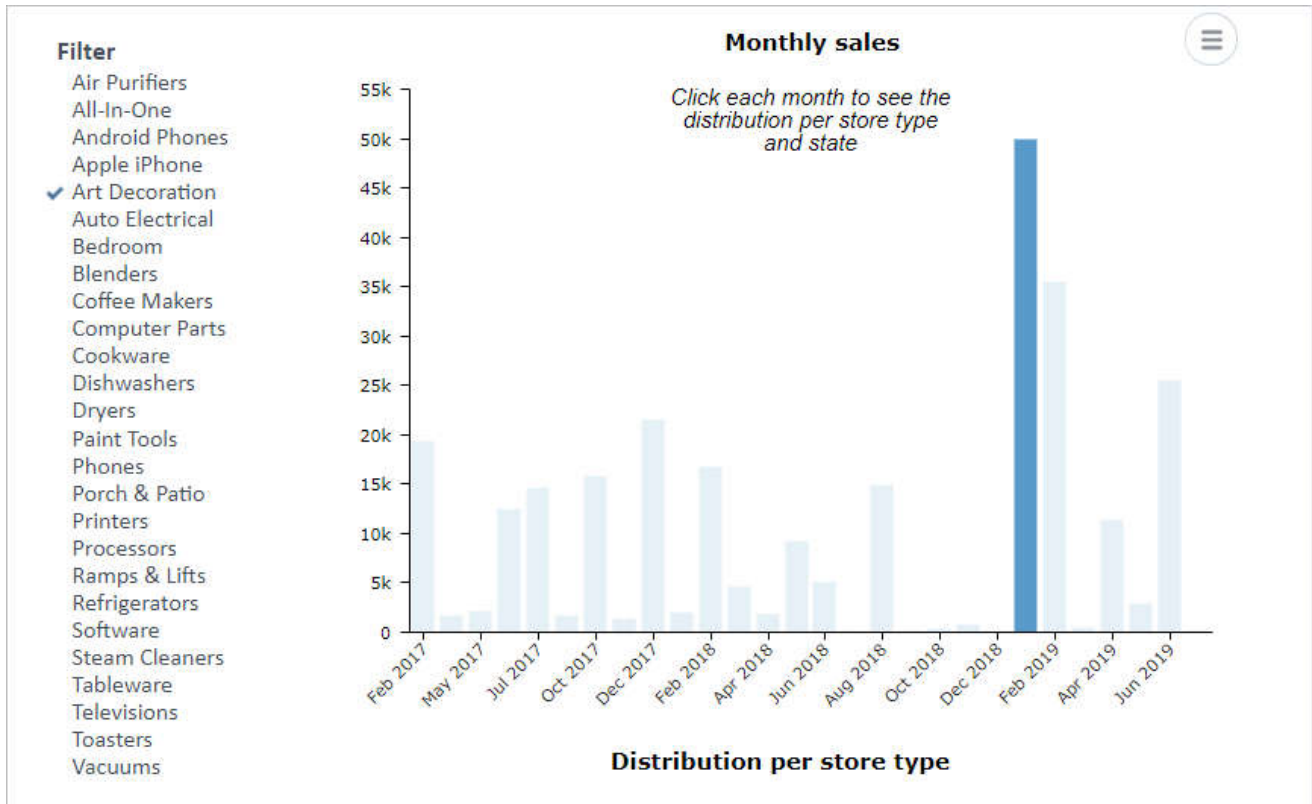
Starting with this release, you have more flexibility with column names displayed in the Table widget. You can rename a column in the widget settings. Point to the **Options** icon next to the column name, and select **Rename in this viz**. In the dialog that opens, provide a new name you want to have in the Table visualization. If you remove the label, the column will use the original name as in the dataset.

You can add a label for each instance of the same column that has a different aggregation. For example, Profit (Sum) and Profit (Avg) each can have a specific label like “Profit” and “Average of Profit” accordingly. Also, you can use special symbols that are not allowed in the dataset columns, for example, “EB w/o Profit” or “% of Sales.”

Profit	Unit Price	Items per Transaction
1.21M	361.13	972.00
66.65K	126.61	770.00
32.07K	101.48	827.00
160.33K	483.16	921.00
397.08K	667.26	826.00
46.15K	118.97	781.00
58.8K	134.23	760.00
60.71K	134.32	851.00
92.23K	219.77	821.00
374.36K	595.35	859.00
752.87K	467.23	865.00
48.59K	105.13	748.00
50.92K	135.68	850.00
278.48K	609.87	722.00
375.65K	635.19	916.00
52.71K	169.81	819.00
82.72K	188.19	779.00
461.43K	515.19	958.00
79.38K	142.16	759.00
75.56K	135.74	862.00

*Improved Storyboards performance*

The Storyboards component is now using optimized queries when working with storyboard pages, customizing their look & feel, and other page properties. Also, the Filters and Highlighters widgets have been enhanced. Now, selecting targets is not required to save filters and highlighters. You can keep them as drafts and select target widgets later.



## INSTALLATION & CONFIGURATION

### Configure logging levels

In Configuration Manager, you can now configure the logging levels for the platform applications.

To configure a logger, click **Add** and specify the following:

- **Log path** — A path to a logger that you want to configure specifically. The prefix “logging.level” is the same for all the loggers and cannot be edited. After the prefix, you can specify a root, a package name, or a class name. For example, if you set a specific class, then all the loggers in the code of the class will use a defined logging level.
- **Level** — The level of logging (Off < Error < Warn < Info < Debug < Trace).
- **Application** — The platform component for logging: Data Preparation, Storyboards, Configuration Manager, Data Server, Notification, Scheduler, Audit.

**Logging**

Debug ?  OFF

Maintenance page ?  OFF

Loggers ?

	Log path	Level	Application	
logging.level	<input type="text" value="root"/>	WARN	DATA PREPARATION	<input type="button" value="DELETE"/>
logging.level	<input type="text" value="dcDataFederator"/>	INFO	STORYBOARDS	<input type="button" value="DELETE"/>
logging.level	<input type="text" value="com.dataclaritycorp.security.filt"/>	ERROR	STORYBOARDS	<input type="button" value="DELETE"/>
logging.level	<input type="text" value="com.dataclaritycorp"/>	INFO	STORYBOARDS	<input type="button" value="DELETE"/>
logging.level	<input type="text" value="com.dataclaritycorp.security.filt"/>	ERROR	DATA PREPARATION	<input type="button" value="DELETE"/>
logging.level	<input type="text" value="root"/>	WARN	STORYBOARDS	<input type="button" value="DELETE"/>
logging.level	<input type="text" value="root"/>	INFO	CONFIG MANAGER	<input type="button" value="DELETE"/>
logging.level	<input type="text" value="dcDataFederator"/>	INFO	DATA PREPARATION	<input type="button" value="DELETE"/>
logging.level	<input type="text" value="com.dataclaritycorp"/>	INFO	DATA PREPARATION	<input type="button" value="DELETE"/>